



VIEW FROM 77TH AVE SE



VIEW FROM 76TH AVE SE & SE 29TH STREET



VIEW OF LONG EAST FACADE



VIEW OF COPPER AND WALL CONDITION CLOSE UP

**MONACO VILLA
EXTERIOR
REMEDiation**

2929 76th Ave SE, Mercer
Island, WA 98040

01/24/24
DESIGN COMMISSION

REVISION SCHEDULE		
REV	DATE	DESCRIPTION

2215901

**CURRENT
CONDITIONS**

DC-01

**MONACO VILLA
EXTERIOR
REMEDIAATION**

2929 76th Ave SE, Mercer
Island, WA 98040

01/24/24
DESIGN COMMISSION

REVISION SCHEDULE		
REV	DATE	DESCRIPTION

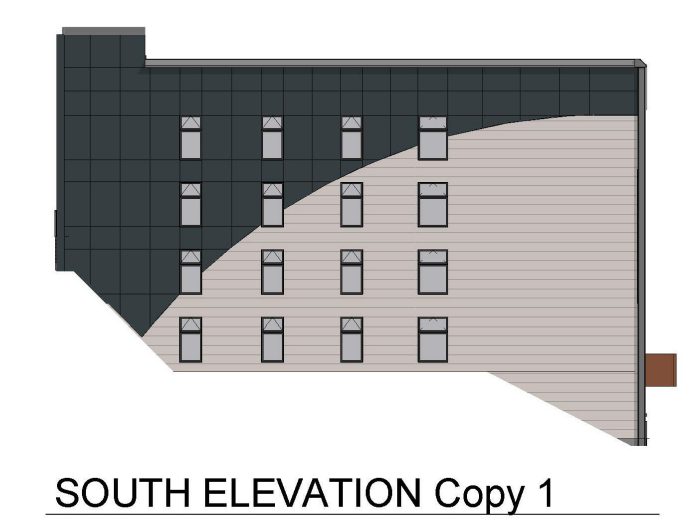
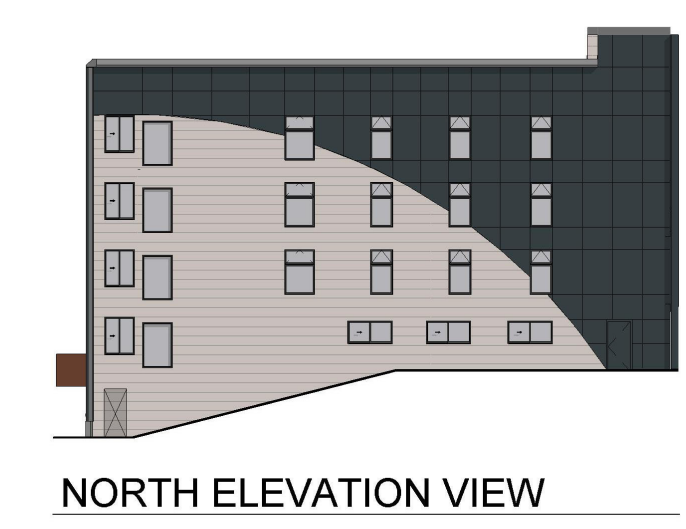
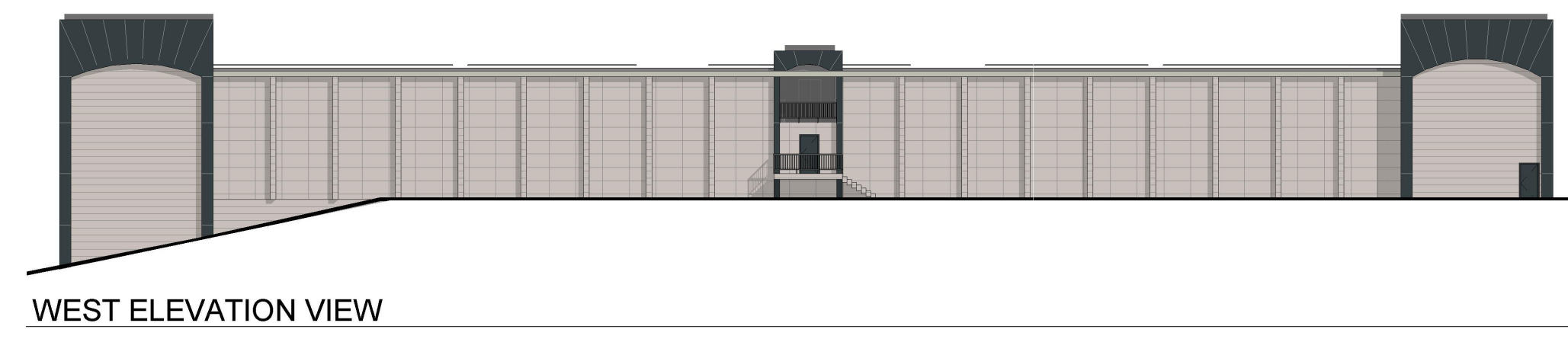
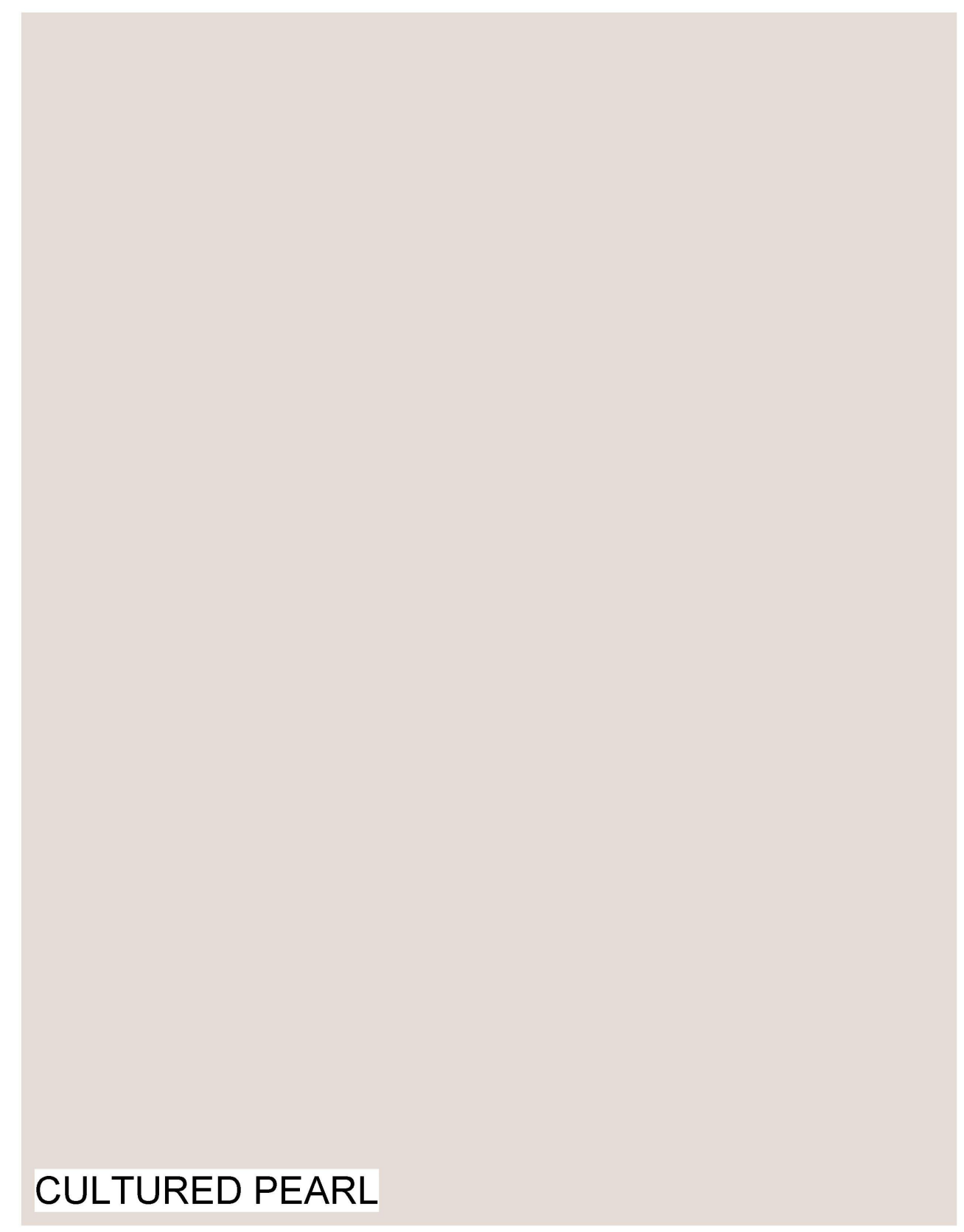
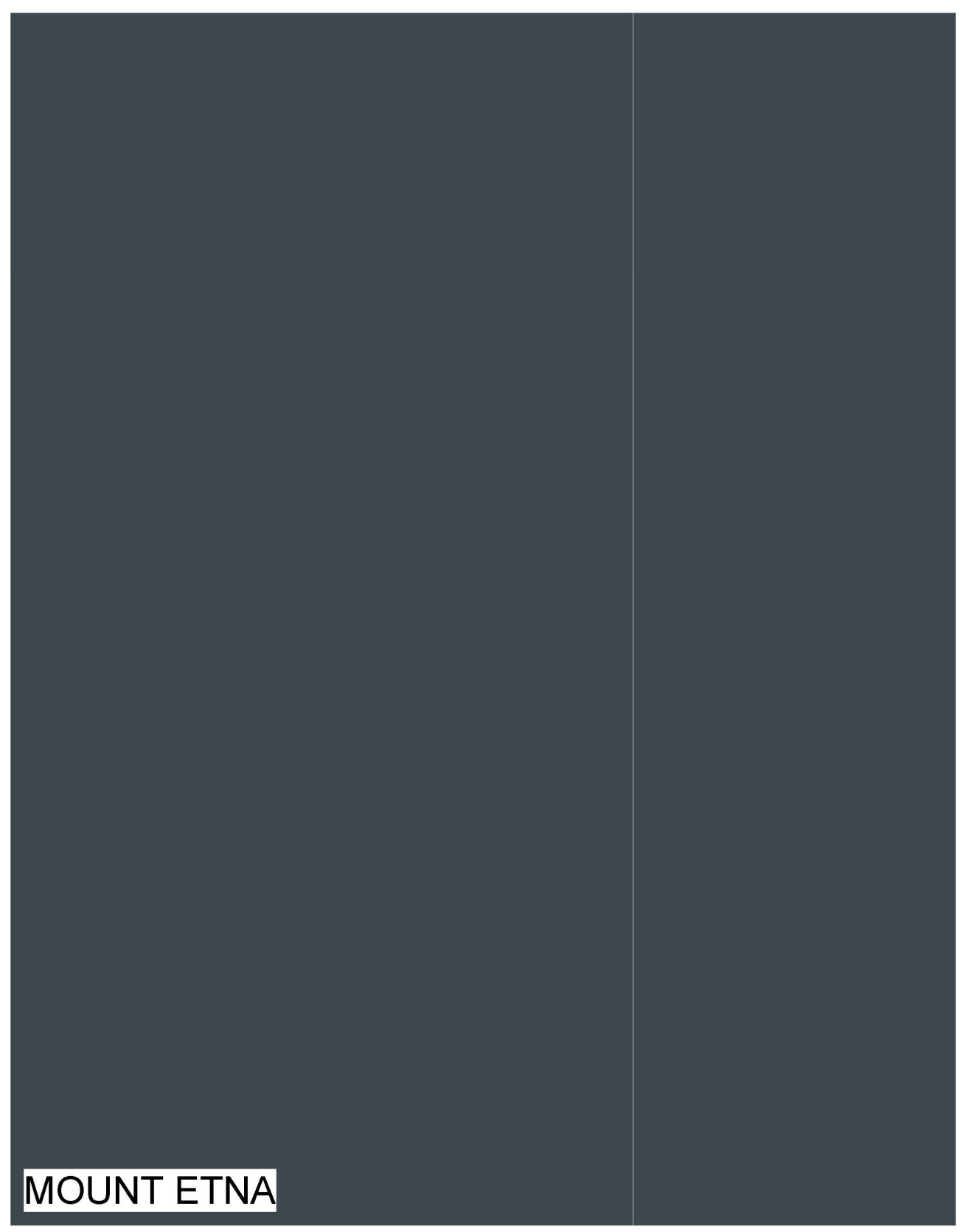
2215901

ORIGINAL DESIGN
PRESENTATION

DC-02

DESIGN OPTION 1

MOUNT ETNA
CULTURED PEARL
TRESPA ROMANTIC WALLNUT



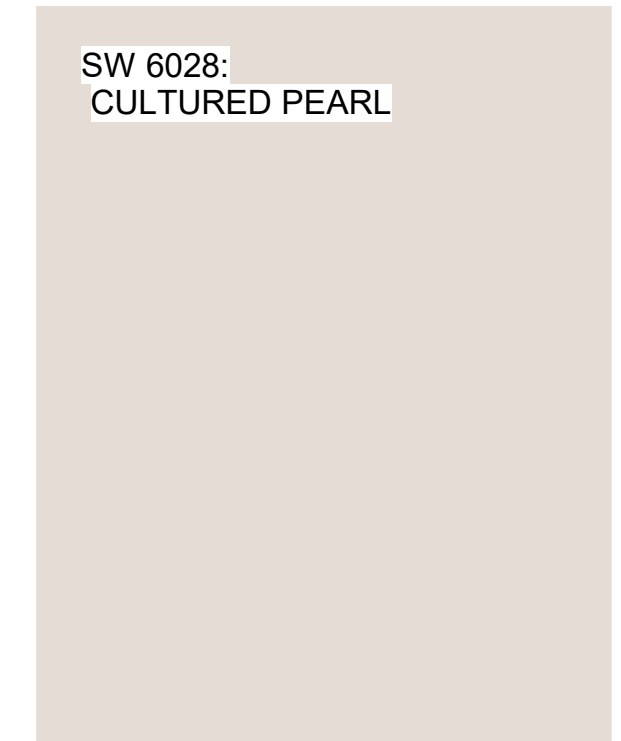
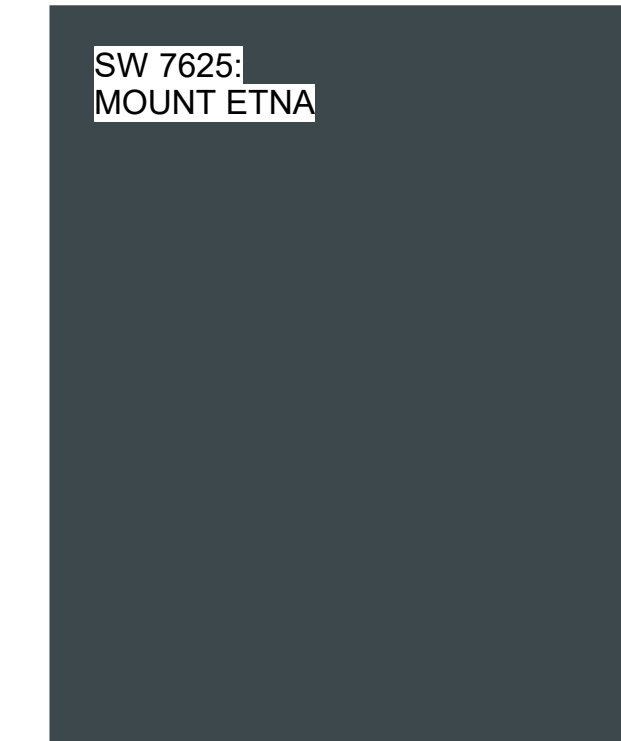
**MONACO VILLA
EXTERIOR
REMEDIAATION**

2929 76th Ave SE, Mercer
Island, WA 98040

01/24/24
DESIGN COMMISSION

COLOR PALETTE:

MAIN BODY PAINT:
CULTURED PEARL
ACCENT PAINT:
MOUNT ETNA
TRESPA:
ROMANTIC WALNUT
ACCENT ENTRY:
REUSED COPPER PANELS



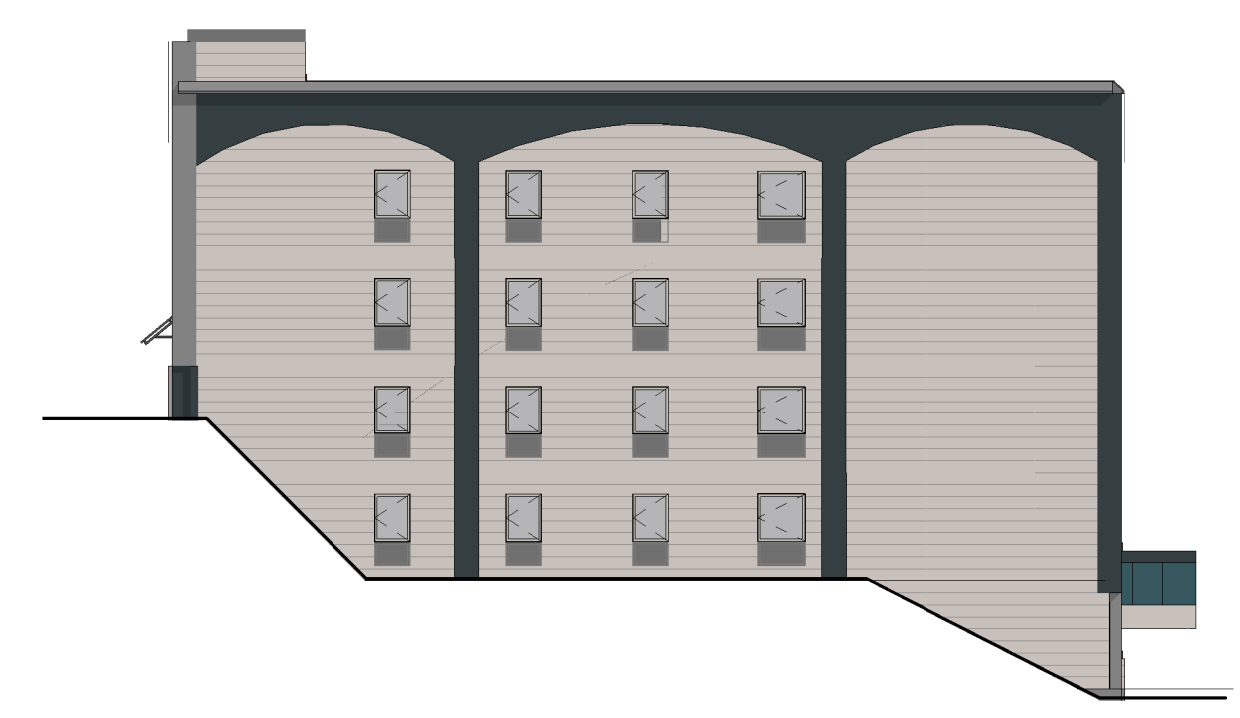
① AERIAL VIEW FROM SOUTHEAST



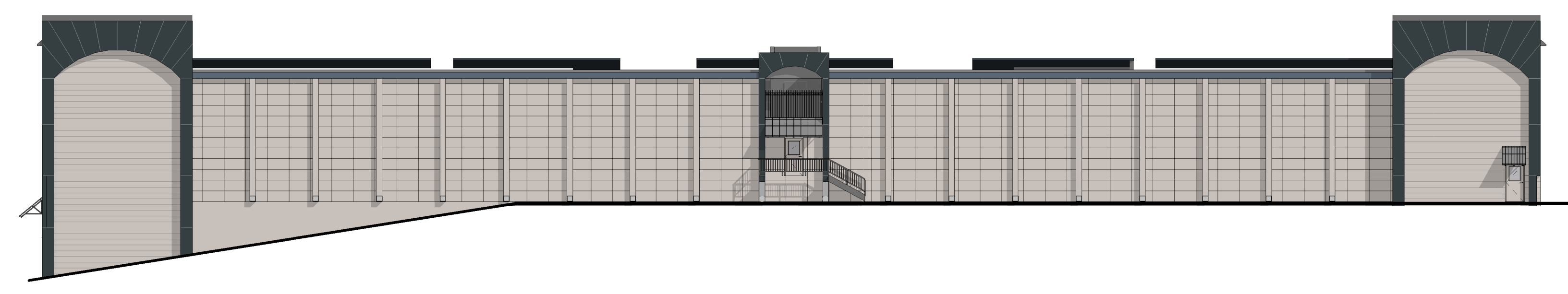
⑤ NORTH ELEVATION VIEW
1/16" = 1'-0"



② EAST ELEVATION VIEW
1/16" = 1'-0"



④ SOUTH ELEVATION VIEW
1/16" = 1'-0"



③ WEST ELEVATION VIEW
1/16" = 1'-0"

REVISION SCHEDULE		
REV	DATE	DESCRIPTION

2215901

UPDATED DESIGN
USING COMMENTS

DC-03

**MONACO VILLA
EXTERIOR
REMEDATION**

2929 76th Ave SE, Mercer
Island, WA 98040

01/24/24
DESIGN COMMISSION

REVISION SCHEDULE	
REV	DESCRIPTION

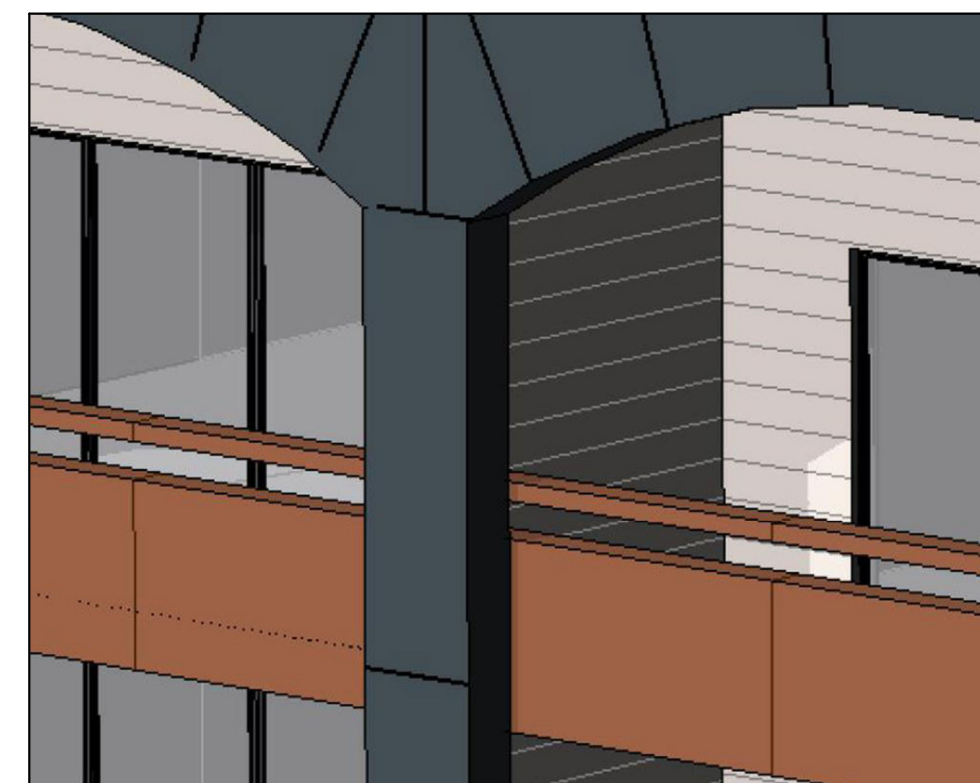
2215901

**ENLARGED AERIAL
VIEW**

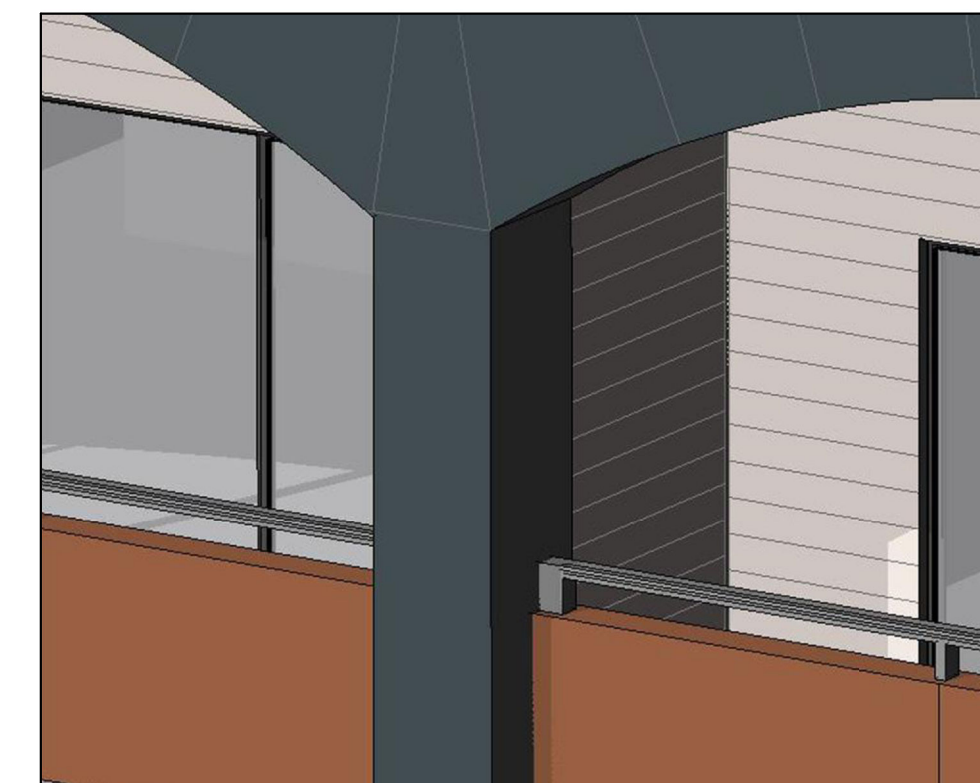
DC-04



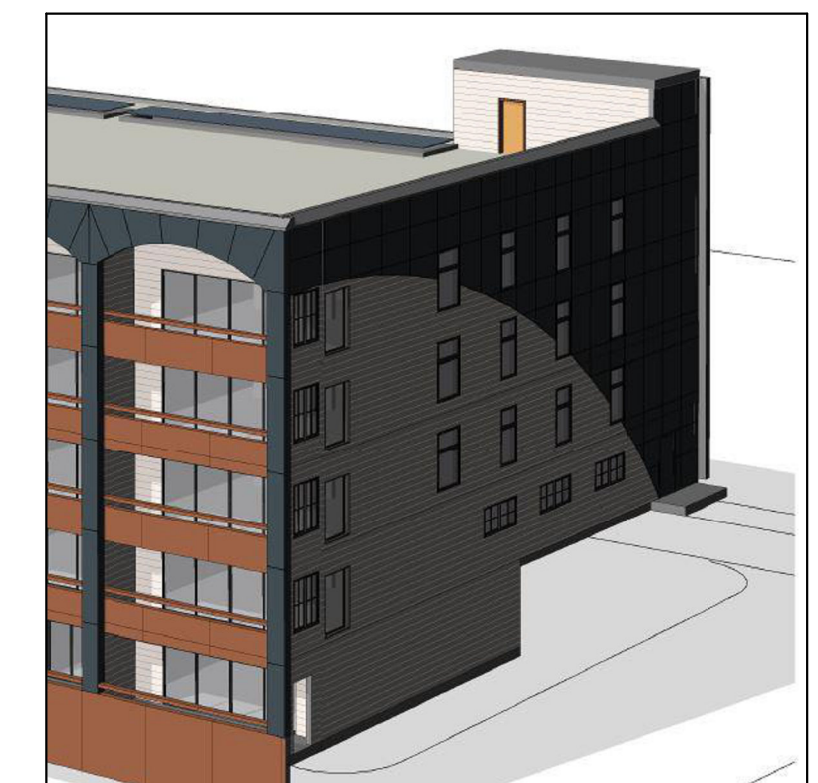
ORIGINAL ENTRY CANOPY WRAPPED
IN TRESPA



ORIGINAL COLUMN TREATMENT
APPEARED SOMEWHAT SHALLOW



UPDATED COLUMN TREATMENT READS AS
MUCH MORE SUBSTANTIAL



ORIGINAL END FACADES TREATED IN A
SUPER GRAPHIC



UPDATED ENTRY CANOPY
WRAPPED IN COPPER REUSED
FROM THE CURRENT BUILDING

UPDATED END FACADES
MIRROR EAST FACADE
RHYTHM AND SCALE